

USER GUIDE FOR DATA VISUALIZATION TOOL

Ricardo Inc.
40000 Ricardo Drive
Van Buren Twp., Michigan 48111-1641
TEL: (734) 397-6666
FAX: (734) 397-6677

Prepared for: U.S. Environmental Protection Agency
Office of Transportation and Air Quality
2000 Traverwood Drive
Ann Arbor, Michigan 48105
Telephone

EPA Contract No: EP-C-11-007
Work Assignment: 0-12
Project: CG001019
Archive: RD.11/514901.1
Date: 26 January 2012
Non-Confidential

Author(s): John J. Kasab
Velliur Subbarao

Contributor(s): Felipe Brandao
Daniel Gross
Henry Huang
Daniel Shepard

Technical Approval: _____ Reviewed by **[Thomas Gutwald]** _____
Thomas Gutwald
Manager / Innovations Department

USER GUIDE FOR DATA VISUALIZATION TOOL

CAUTION

The Data Visualization Tool v1.08 design space encompasses many combinations of vehicle class, engine, transmission, and other design parameters. Some combinations are unrealistic and hence may yield results that are not meaningful. While guidance is provided in the User Guide for suitable selections, the Data Visualization Tool itself will not allow some combinations. However, an automotive expert should be consulted for validity of the design choices and results.

EXECUTIVE SUMMARY

This User Guide is for the Data Visualization Tool version 1.08, which was released by Ricardo on 26 January 2012 to the U.S. Environmental Protection Agency (EPA) under EPA Contract Number EP-W-07-064, Work Assignment 2-2, assigned to Systems Research and Applications Corporation (SRA).

Table of Contents

1	INTRODUCTION.....	5
2	BACKGROUND	5
3	INSTALLING THE DATA VISUALIZATION TOOL.....	6
4	DESIGN SPACE QUERY	7
5	DESIGN SPACE ANALYSIS	10
6	PLOTTING DESIGN SPACE ANALYSIS RESULTS	15
7	EFFICIENT FRONTIER	17
8	CONCLUSIONS.....	18
9	REFERENCES.....	18
10	APPENDIX.....	19

LIST OF FIGURES

	<u>Page</u>
Figure 3.1: Setting up the Data Visualization Tool	6
Figure 4.1: Design Space Query Screen	7
Figure 4.2: Design Query Engines Selection	8
Figure 4.3: Design Query Transmissions Selection	9
Figure 4.4: Design Query Output Definition	9
Figure 5.1: Design Space Analysis Screen.....	13
Figure 5.2: Full Size Car Design Space Analysis Example.	13
Figure 5.3: Full Size Car Design Space Analysis example.	14
Figure 5.4: Full Size Car Design Space Analysis example.	14
Figure 5.5: Standard Car Design Space Analysis Example Comparing Powertrains with EGR DI Turbo Engine.....	15
Figure 6.1: Design Comparison: Light Duty Truck with Stoichiometric DI Turbo Engine with Either Eight-Speed Automatic or P2 Hybrid	16
Figure 7.1: Efficient Frontier Screen: Light Duty Truck with Stoichiometric DI Turbo Engine in P2 Hybrid.....	17
Figure 10.1: Baseline and Start-Stop Simulation Matrix.....	19
Figure 10.2: P2 and Input Powersplit hybrid simulation matrix.....	20

1 INTRODUCTION

This User Guide is for the Data Visualization Tool version 1.08, which was released by Ricardo on 26 January 2012 to the U.S. Environmental Protection Agency (EPA) under EPA Contract Number EP-W-07-064, Work Assignment 2-2, assigned to Systems Research and Applications Corporation (SRA). The User Guide is intended as a companion to the program report "Computer Simulation of Light Duty Vehicle Technologies for Greenhouse Gas Emission Reduction in the 2020–2025 Timeframe" (RD.10/157405.8; Ricardo and SRA, 2011), which provides a comprehensive description of the technology packages that constitute the design space embodied in the Data Visualization Tool.

Ricardo was subcontracted by SRA, a wholly owned subsidiary of SRA International, Inc., under contract to EPA to assess the effectiveness of future light duty vehicle (LDV) technologies on future vehicle performance and greenhouse gas (GHG) emissions in the 2020–2025 timeframe. GHG emissions are a globally important issue, and the EPA's Office of Transportation and Air Quality (OTAQ) has been chartered with examining the GHG emissions reduction potential of LDVs, including passenger cars and light-duty trucks.

SRA is a company of over 7,000 staff dedicated to solving complex problems of global significance for government organizations serving the civil government, global health, and national security markets. SRA's Air Programs and Climate Change Account works extensively with OTAQ and other EPA offices on regulatory and voluntary programs to reduce air pollution and address climate change.

2 BACKGROUND

The Data Visualization Tool uses the Response Surface Model (RSM) set generated by the Complex Systems approach to represent the vehicle performance simulation results over the design space studied for light duty vehicles in the 2020–2025 timeframe (Ricardo and SRA, 2011). These simulations cover multiple variations of vehicle configuration, including several combinations of advanced powertrain and vehicle technologies in the seven LDV classes ranging from Small Car through Light Heavy Duty Truck. Vehicle configurations with unacceptable performance, such as combined fuel economy below a certain threshold or acceleration times longer than some benchmark value, can be excluded from further study. More information on the technology packages included in the design space may be found in the program report by Ricardo and SRA (2011).

The tool samples vehicle configurations from a selected subset of the design space by using Monte Carlo type capabilities to pick input parameter values from a uniform distribution. Defining selected portions of the design space and plotting the results visualizes the effect of these parameters on vehicle fuel economy and performance, allowing trade off analysis via constraints setting to be performed over a wide design space representing the 2020–2025 technologies as applied.

The Data Visualization Tool allows the user to assess efficiently the effects of various combinations of future technologies on GHG emissions and other vehicle performance metrics. The tool allows the user to query the RSM and investigate options leading to equivalent GHG emissions levels.

3 INSTALLING THE DATA VISUALIZATION TOOL

Ensure that you have the file "Data_Visualization_Tool_v1-08_26- Jan-2012.zip", and extract the files within to a directory on your computer. The files should include the following:

- Directory "ComplexToolData"
- Directory "lib"
- File "DatabaseSetup.cfg"
- File "EPA_Tool.exe"

Once you have extracted the files from the .zip archive, you can double-click on the EPA_Tool.exe file to start it. The first time you extract the files, you should receive this message: "Please set up your database path."

From the main window, click on the "File" menu, then select "Preferences". Use the "Browse" button to pop up a navigation window. Navigate to the directory where you placed the "ComplexToolData" directory, double click on the directory "ComplexToolData" to open it, then click the "Open" button to close the navigation window. Click the "Close" button to close the Preferences menu and save your settings.

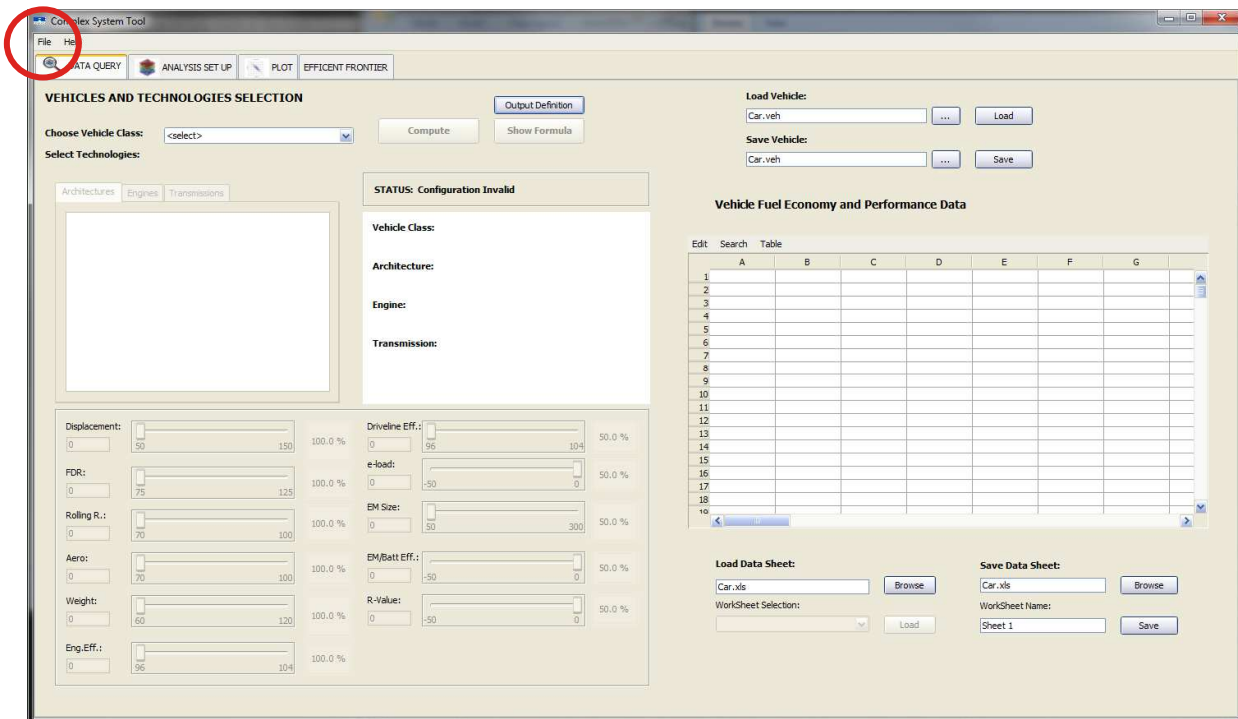


Figure 3.1: Setting up the Data Visualization Tool

4 DESIGN SPACE QUERY

The Design Space Query within the Data Visualization Tool allows the user to assess a specific vehicle configuration in the design space by selecting a platform, engine, and transmission, and by setting the continuous variables within the design space range. The generated performance results are then reported in a table that is exportable to Excel. The user can assess multiple vehicle configurations and compare them in Excel. The tool table also allows the user to apply spreadsheet formulas for quick, on-the-side computation. An example of the Design Space Query is shown in Figure 4.1.

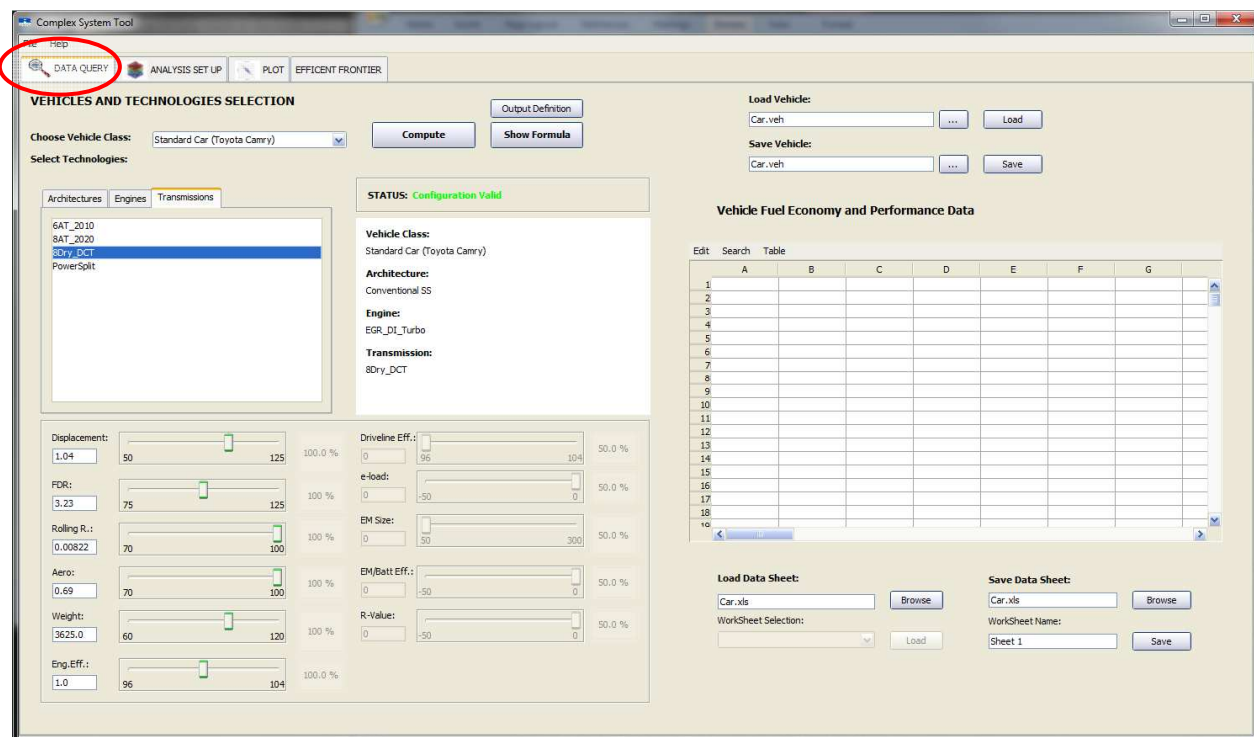


Figure 4.1: Design Space Query Screen

Process:

1. From the pull-down menu, choose a vehicle class: Small Car, Standard Car, Small MPV, Full Size Car, Large MPV, Truck, and Large LD Truck
2. From the "Architecture" tab, choose from:
 - a. Conventional SS for conventional powertrain with stop-start function
 - b. Hybrid P2 for the P2 Hybrid powertrain
 - c. Hybrid PS for the Powersplit Hybrid powertrain
3. From the "Engines" tab, choose from:
 - a. Baseline for the 2010 baseline engine **[Use only with 2010 transmission]**
 - b. Stoich_DI_Turbo for the Stoichiometric DI Turbo gasoline engine
 - c. Lean_DI_Turbo for the Lean/Stoichiometric switching DI Turbo gasoline engine
 - d. EGR_DI_Turbo for the EGR DI Turbo gasoline engine
 - e. 2020_Diesel for the Advanced Diesel engine
 - f. Atkinson_CPS for the Atkinson engine with CPS valvetrain
 - g. Atkinson_DVA for the Atkinson engine with DVA valvetrain

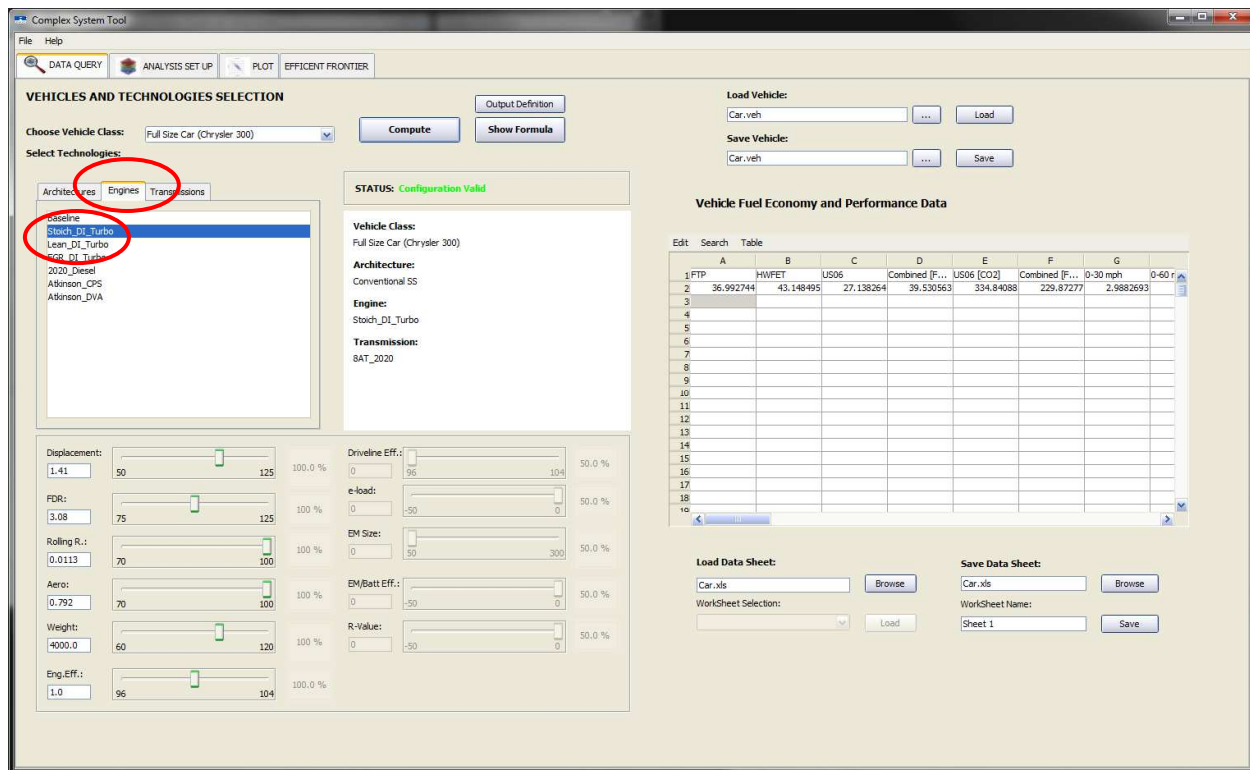


Figure 4.2: Design Query Engines Selection

4. From the "Transmissions" tab, choose from:
 - a. 6AT_2010 for the 2010 baseline transmission [**Use only with baseline engine**]
 - b. 6AT_2020 for the advanced six-speed automatic transmission [*Small Car only*]
 - c. 8AT_2020 for the advanced eight-speed automatic transmission
 - d. 6Dry_DCT for the advanced six-speed DCT [*Small Car only*]
 - e. 8Dry_DCT for the advanced eight-speed DCT with dry clutch
 - f. 8Wet_DCT for the advanced eight-speed DCT with wet clutch [*LHDT, LDT, and Large MPV only*]
 - g. Powersplit for the Powersplit planetary gearbox [*only with Hybrid PS Architecture*]

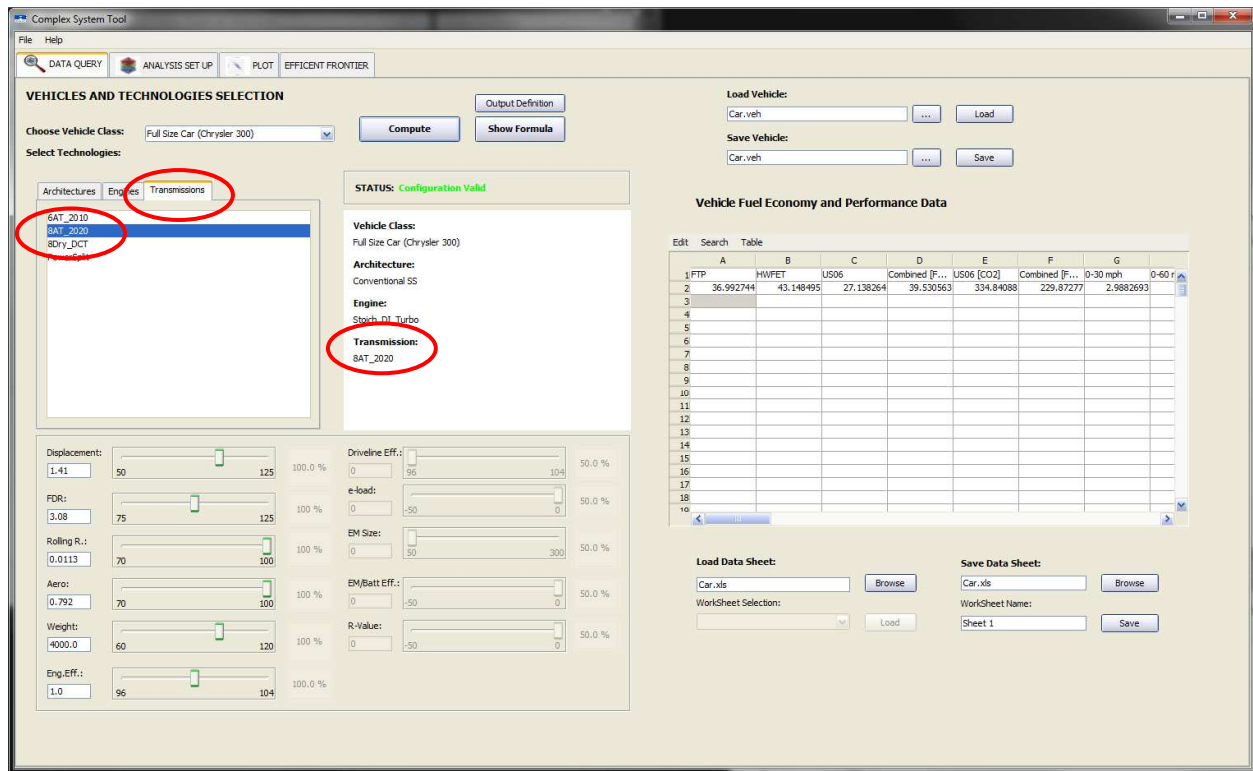


Figure 4.3: Design Query Transmissions Selection

5. Click on the "Output Definition" button to select the outputs desired.
 - a. Default are Fuel economy values from the FTP, HWFET, and US06 cycles
 - b. Choose among Combined (for CAFE comparisons), CO₂ emissions, and performance metrics
 - c. Press "Save & Close" button to close dialog box

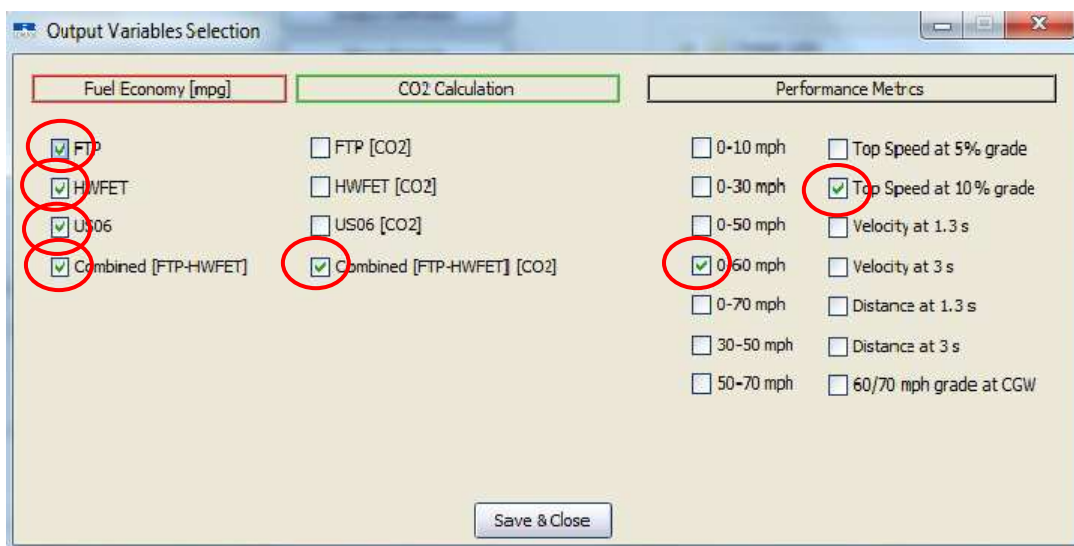


Figure 4.4: Design Query Output Definition

6. Adjust continuous vehicle parameters using the slider bars.
 - a. Slider bars are in % from nominal value. Nominal value is displayed in the box under the variable name. *Only active variables have a white box; grayed boxes are inactive.*
 - b. Displacement is in liters
 - c. FDR (Final Drive Ratio) is a ratio
 - d. Rolling R parameter is dimensionless
 - e. Aero is the aerodynamic drag, Cd.A (m²)
 - f. Weight is the vehicle mass in lb
 - g. Eng Eff is an adjustment to the engine efficiency, which shifts the fuel consumption accordingly
 - h. EM Size is the electric machine power in kW
7. Press the "Compute" button to generate results in the spreadsheet area on the center right of the Data Query screen.
8. Results can be copied directly out of the table or exported to a spreadsheet (.csv) file
 - a. Save the results to an Excel file by clicking on "Save data Sheet → Browse" button [lower right of the screen], and in the pop up window navigate to the directory where the file is to be saved in the "Look In" field. Enter the file name in the "File Name" field. Click the "Open" button. The pop up window will disappear. Fill in the "Save data Sheet → Worksheet Name" field and click the "Save" button.
 - b. Input parameters are shown as the scaling factor (%/100), not the actual parameter value.
 - c. Previously saved data can be loaded by following "Load Data Sheet → Browse" button, choosing the appropriate file, and clicking the "Load" button. A pop up window will appear asking the user to confirm data loading.

Notes:

- Not all LDV classes have all powertrain architectures, engines, or transmissions. The tool will indicate whether a given combination is valid or not. Refer to the Simulation matrix in the Appendix for the combinations included in the design space.
- The Heavy LD Truck (LHDT class) has a 2010 baseline Diesel engine "2010_Diesel" that goes with the six-speed automatic transmission "AT_2010"
- For the Hybrid P2 Architecture, the user should choose the appropriate DCT (dry or wet)
- "Engines" and "Transmissions" tabs will become active only after the architecture selection is made.

5 DESIGN SPACE ANALYSIS

A more comprehensive survey of the design space can be conducted using the Design Space Analysis in the Data Visualization Tool, which allows the user to assess the performance of multiple vehicle configurations from a significant portion of the design space simultaneously. Each design is generated by selecting a vehicle platform, engine, and transmission, and then by selecting ranges for the continuous input variables. Several of these design space analyses may be compared against each other to understand the effects of one or more parameters on vehicle performance. Figure 5.1 shows the screen where the design space analysis is set up. For each of the continuous variables, values are generated using a Monte Carlo analysis from a uniform distribution over the range selected.

Process:

1. From the pull-down menu, choose a vehicle class: Small Car, Standard Car, Small MPV, Full Size Car, Large MPV, Truck, and Large LD Truck
2. From the "Architecture" tab, choose from:
 - a. Conventional SS for conventional powertrain with stop-start function
 - b. Hybrid P2 for the P2 Hybrid powertrain
 - c. Hybrid PS for the Powersplit Hybrid powertrain
3. From the "Engines" tab, choose from:
 - a. Baseline for the 2010 baseline engine **[Use only with 2010 transmission]**
 - b. Stoich_DI_Turbo for the Stoichiometric DI Turbo gasoline engine
 - c. Lean_DI_Turbo for the Lean/Stoichiometric switching DI Turbo gasoline engine
 - d. EGR_DI_Turbo for the EGR DI Turbo gasoline engine
 - e. 2020_Diesel for the Advanced Diesel engine
 - f. Atkinson_CPS for the Atkinson engine with CPS valvetrain
 - g. Atkinson_DVA for the Atkinson engine with DVA valvetrain
4. From the "Transmissions" tab, choose from:
 - a. 6AT_2010 for the 2010 baseline transmission **[Use only with baseline engine]**
 - b. 6AT_2020 for the advanced six-speed automatic transmission [*Small Car only*]
 - c. 8AT_2020 for the advanced eight-speed automatic transmission
 - d. 6Dry_DCT for the advanced six-speed DCT [*Small Car only*]
 - e. 8Dry_DCT for the advanced eight-speed DCT with dry clutch
 - f. 8Wet_DCT for the advanced eight-speed DCT with wet clutch [*LHDT, LDT, and Large MPV only*]
 - g. Powersplit for the Powersplit planetary gearbox [*only with Hybrid PS Architecture*]
5. Click on the "Output Definition" button to select the outputs desired.
 - a. Default are Fuel economy values from the FTP, HWFET, and US06 cycles
 - b. Choose among Combined (for CAFE comparisons), CO₂ emissions, and performance metrics
 - c. Press "Save & Close" button to close dialog box
6. Adjust continuous vehicle parameters using the slider bars in the "Variable" tab after clicking on the desired variables in check box (es).
 - a. Slider bars are in % from nominal value. Nominal value is displayed in the box under the variable name. *Only active variables have a white box; grayed boxes are inactive.*
 - b. Displacement is in liters
 - c. FDR (Final Drive Ratio) is a ratio
 - d. Rolling R parameter is dimensionless
 - e. Aero is the aerodynamic drag, Cd.A (m²)
 - f. Weight is the vehicle mass in lb
 - g. Eng Eff is an adjustment to the engine efficiency, which shifts the fuel consumption accordingly
 - h. EM Size is the electric machine power in kW
7. Once all the variables are selected, fill in the "Number of Designs" field. [values from 500 to 5000 are reasonable]. Choose the color by clicking on "Choose Color" button and selecting any desired color from the pop up window. Clicking on "OK" or "Cancel" or "Reset" button closes the pop up window.

8. To set up the plots, click on "Design List Name Field" on the top right of the screen and enter a name—for example, LDT_example. Then click on the "+" button. The name "LDT_example" will appear in a window under "Plot Set Up" and will be highlighted. It is important to have this name highlighted when additional designs are added next.
9. Fill in a meaningful name in the "Name of Design" field [bottom left of screen] and click on the "Generate" button. The computations of Monte Carlo analysis will complete in a few seconds. The progress can be monitored on the bar next to the "Generate" button. Once the design is generated, the name of the design will appear on the "Design" list on the top right portion of the screen. **CAUTION:** The "Generate" button will be grayed out if the combination is not valid; some combinations indicated as valid will not generate meaningful results. Please refer to the Simulation Matrix in the Appendix to see which combinations of vehicle class, architecture, engine, and transmission were included in the study.
10. Repeat steps 1-9 for new designs that need to be compared.
11. Any design can be deleted by first selecting the design and clicking on the "Delete Selected" button. A pop up window will ask for confirmation on decision to delete and gives options of yes/no/cancel.
12. **CAUTION:** The "Clear All" button deletes all the Designs that are shown in the window under "Plot Set Up". However, the user can reload the designs using the "Results Database" button.
13. Constraints are set by choosing the variable by check box and setting values in the minimum and maximum fields.
14. The "Reset Constraint" button reverts back to the values chosen in the original design for the range of values.
15. The "Results Database" button allows the user to look at all the designs that are in the directory where the designs are stored [Complex tools Results database is default]. The user can choose a design from the database and click on the "Load and Close" button to close the pop up window. Similarly, the user can delete a design from the database.

Once generated, the results at the design points are stored and may be plotted to visualize the effects of varying vehicle parameters over the design space. By carefully building a design and varying the parameters, the user can gain an understanding of the effect of each technology and the interactions between technologies. Figures 5.2-5.4 show examples of plots that compare two design space analyses. In these cases, the red points are for a Full Size Car with advanced diesel engine and dry-clutch DCT, whereas the blue points are for a Full Size Car with stoichiometric DI turbo engine and automatic transmission. The black point is the 2010 baseline value. For these examples, the engine displacement was varied from 50% to 125% of nominal, or 0.71 to 1.8 l displacement for the stoichiometric DI turbo engine and 1.4 to 3.6 l for the diesel, and the vehicle mass, from 70% to 100% of nominal, or 2800 to 4000lb.

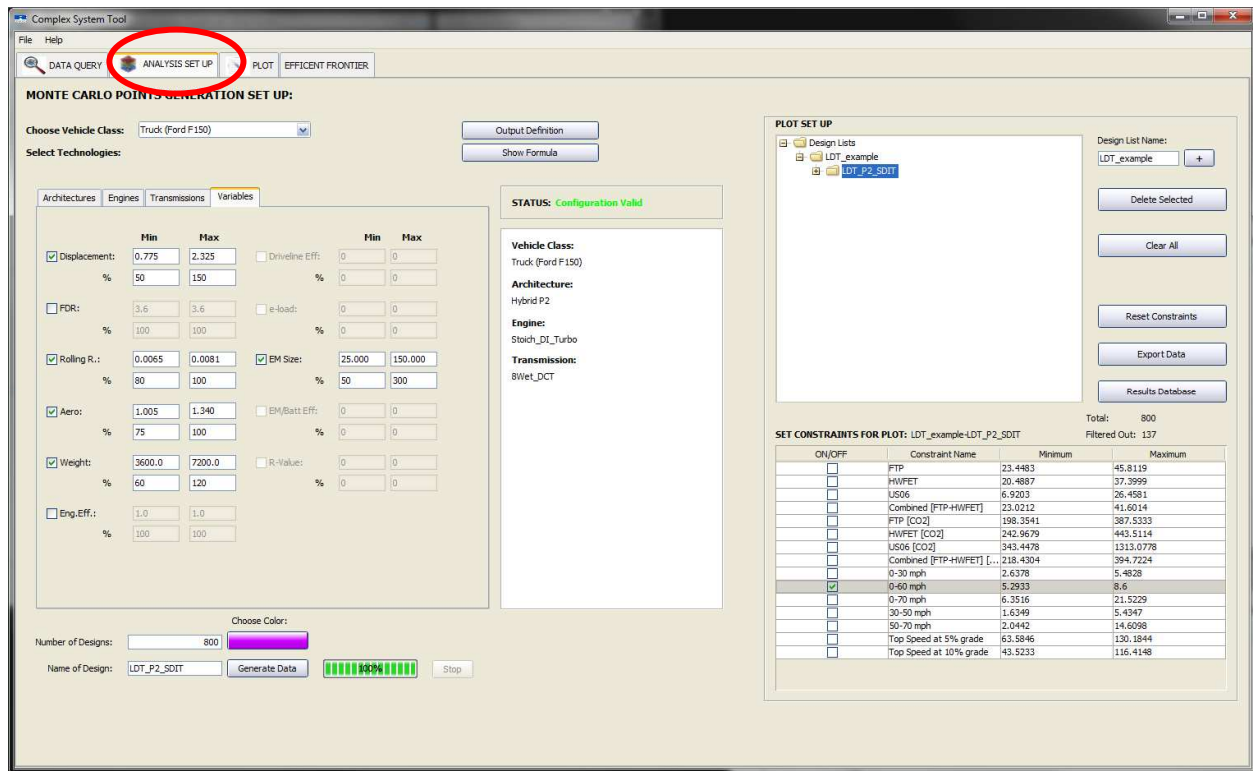


Figure 5.1: Design Space Analysis Screen

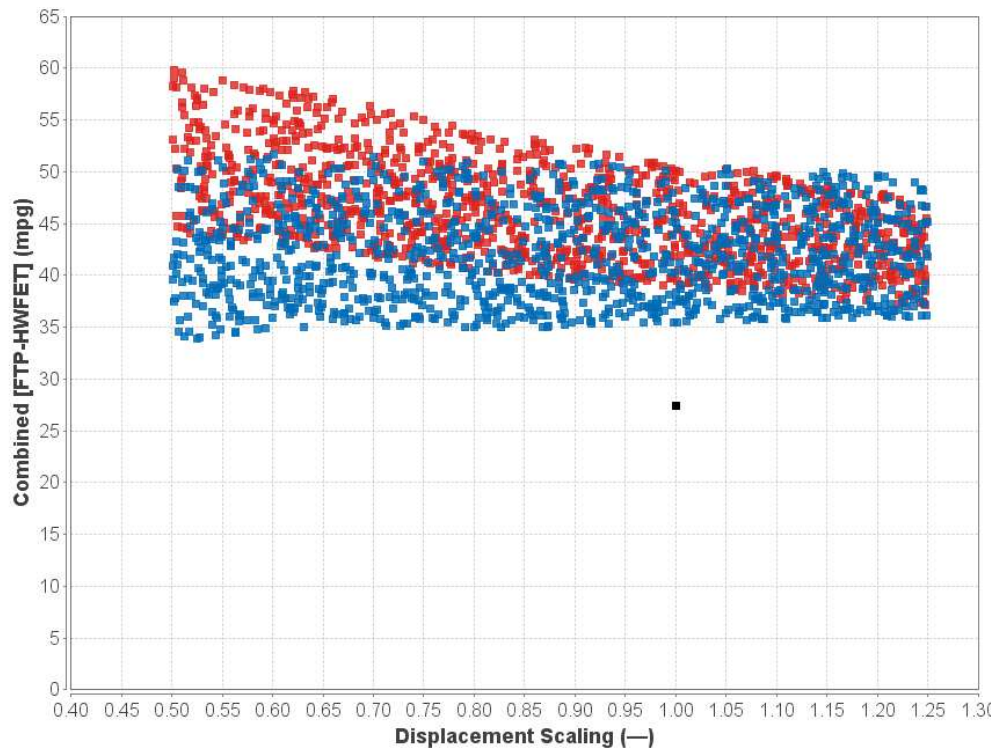


Figure 5.2: Full Size Car Design Space Analysis Example. Black point is 2010 baseline; red points are advanced diesel and dry-clutch DCT and blue points are Stoichiometric DI Turbo with advanced automatic transmission.

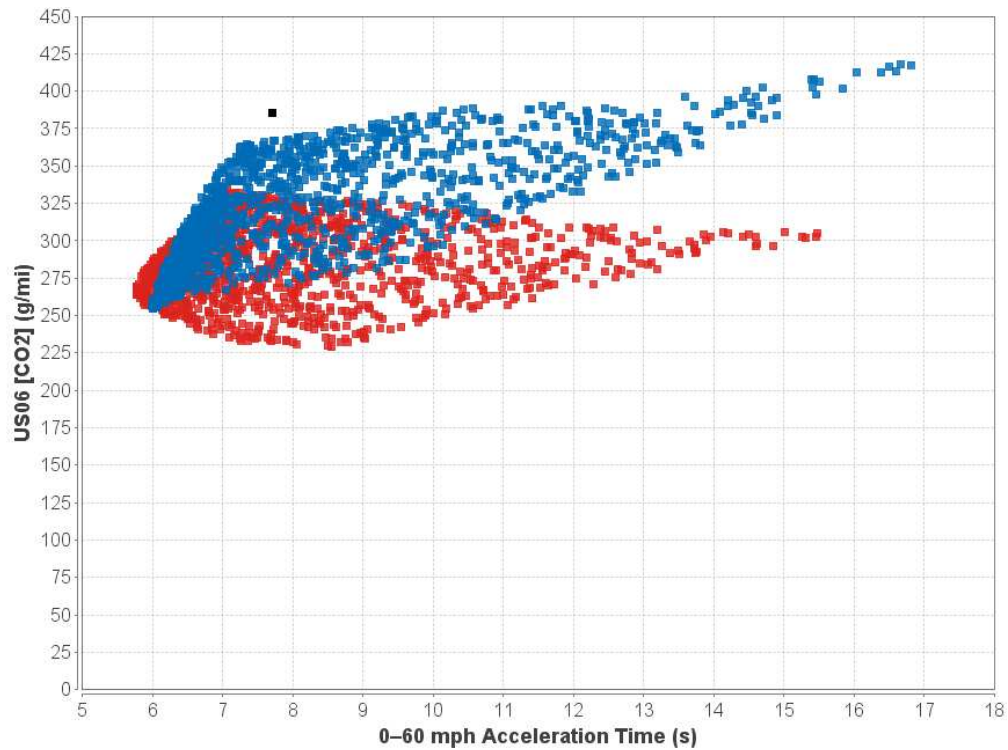


Figure 5.3: Full Size Car Design Space Analysis example. Black point is 2010 baseline; red points are advanced diesel and dry-clutch DCT; and blue points are Stoichiometric DI Turbo with advanced automatic transmission.

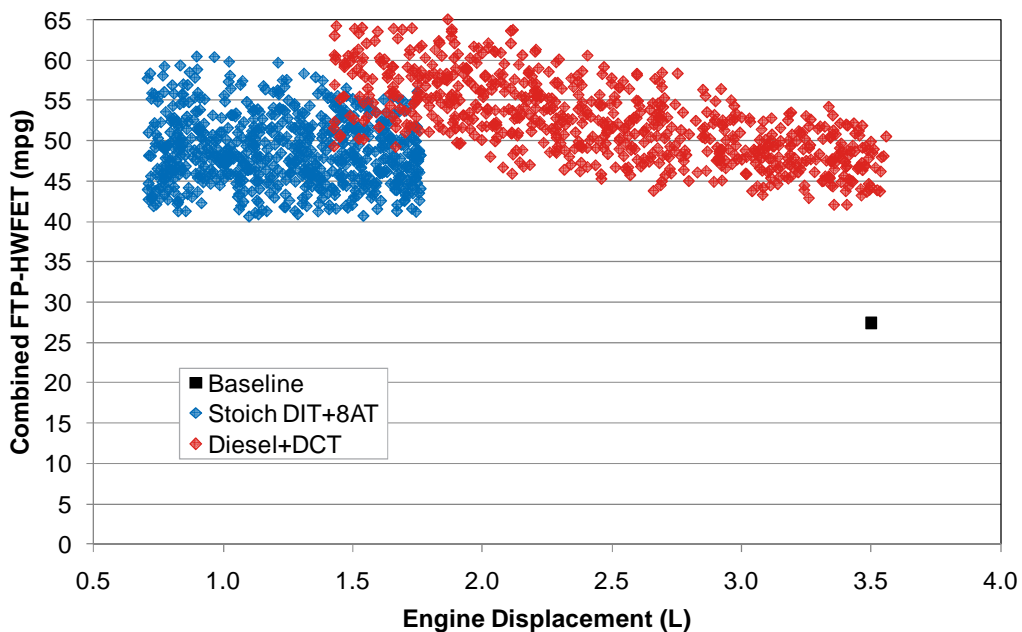


Figure 5.4: Full Size Car Design Space Analysis example. Black point is 2010 baseline; red points are advanced diesel and dry-clutch DCT; and blue points are Stoichiometric DI Turbo with advanced automatic transmission.

The example in Figure 5.5 compares various configurations of the Standard Car, all with the EGR DI Turbo engine but with different powertrains. The two Conventional Stop-Start cases have the advanced eight-speed automatic and dry-clutch DCT, shown in blue and gray, respectively. The Powersplit hybrid is shown in green, and the P2 Hybrid, in red. The black point is the 2010 baseline value.

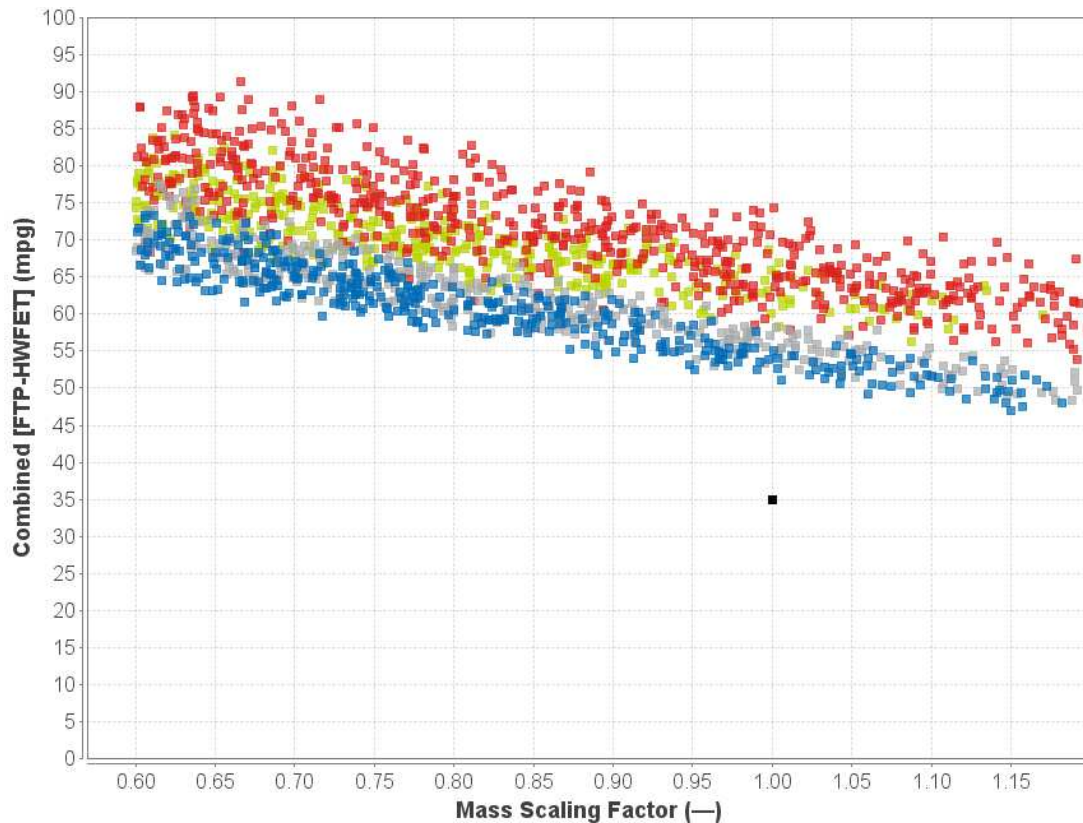


Figure 5.5: Standard Car Design Space Analysis Example Comparing Powertrains with EGR DI Turbo Engine.
Black point is 2010 baseline; blue points are advanced automatic; gray are dry-clutch DCT; green are Powersplit; and red are P2 Hybrid.

6 PLOTTING DESIGN SPACE ANALYSIS RESULTS

The Design Space Analysis described in Section 5 sets up the various designs—combinations of vehicle, engine, transmissions, and the range of parameter values for each design. The next tab "Plot" allows the user to set up the variables to be plotted and viewed in the Data Visualization Tool.

Process:

1. Click on Plot tab. In the "Plot Page Set Up" window, fill in the "number of rows" and "number of columns" fields, and indicate whether the plots should use results with units or dimensionless scaling factors.

2. In the "Plots" section, click on the check boxes to choose the designs to compare and plot. The user can also choose to show values otherwise excluded by the constraints.
3. Clicking on the "Set" button will show the plot grid.
4. Below the "Set" button, there are three fields. In the first field, choose "all plots" or design name.
 - a. In the second field choose the x-axis variable of the plot. Clicking inside this field will display a list of options. [Displacement, FDR, rolling Resistance, and Aero are some examples of good choices for x-variables. These variables are set up in step 6 of the Design Analysis setup]
 - b. In the third field, choose the y-variable of the plot. [FTP, HWFET, US06, and Top speed at 5% grade are some examples of y-variables. These variables are set up in Output option in step 5 of the Design Analysis setup]
5. The user has to fill in x and y variables for each plot.

An example plot screen with 2 rows and 2 columns is shown in Figure 6.1

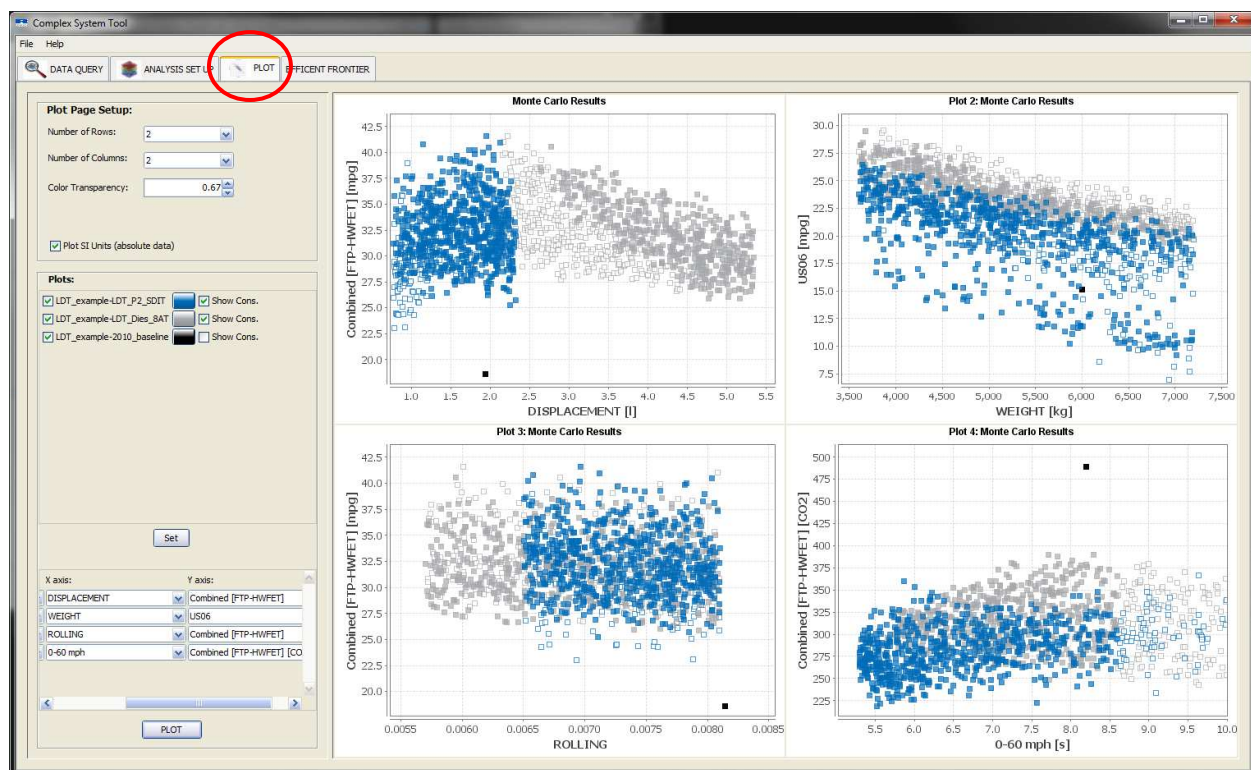


Figure 6.1: Design Comparison: Light Duty Truck with Stoichiometric DI Turbo Engine with Either Eight-Speed Automatic or P2 Hybrid

Once generated, the results at the design points are stored and may be plotted to visualize the effects of varying vehicle parameters over the design space. By carefully building a design and varying the parameters, the user can gain an understanding of the effect of each technology and the interactions between technologies.

7 EFFICIENT FRONTIER

Part of assessing the selected regions of the design space is to find configurations that balance efficiency and performance. The Data Visualization Tool identifies an Efficient Frontier, which is the bound of the sampled design space that has the most desirable performance. The user must first define a dataset using the Design Space Analysis, described above in Section 5, and then select the Efficient Frontier tab in the Data Visualization Tool.

Process:

1. Click on "Efficient Frontier" tab
2. Select the desired design in the "Design" field by clicking on the arrow button and selecting the desired design by clicking on it.
3. The "Performance Metric" is chosen from the available choices by clicking on the arrow button and then clicking on the desired metric.
4. Next choose the "Driving schedule" among the choices first by clicking the arrow and then clicking on the drive cycle.
5. The user can choose the "granularity %" and can also show only the frontier.
6. Lastly, click on the "Show efficient Frontier button". The design points and the efficient frontier line connecting the most desirable performance points will appear on the window

An example of the "Efficient Frontier" screen is shown in Figure 7.1. The Efficient Frontier is marked out in red, and the user can click on the data points along the frontier to discover the vehicle configurations that lie on the frontier.

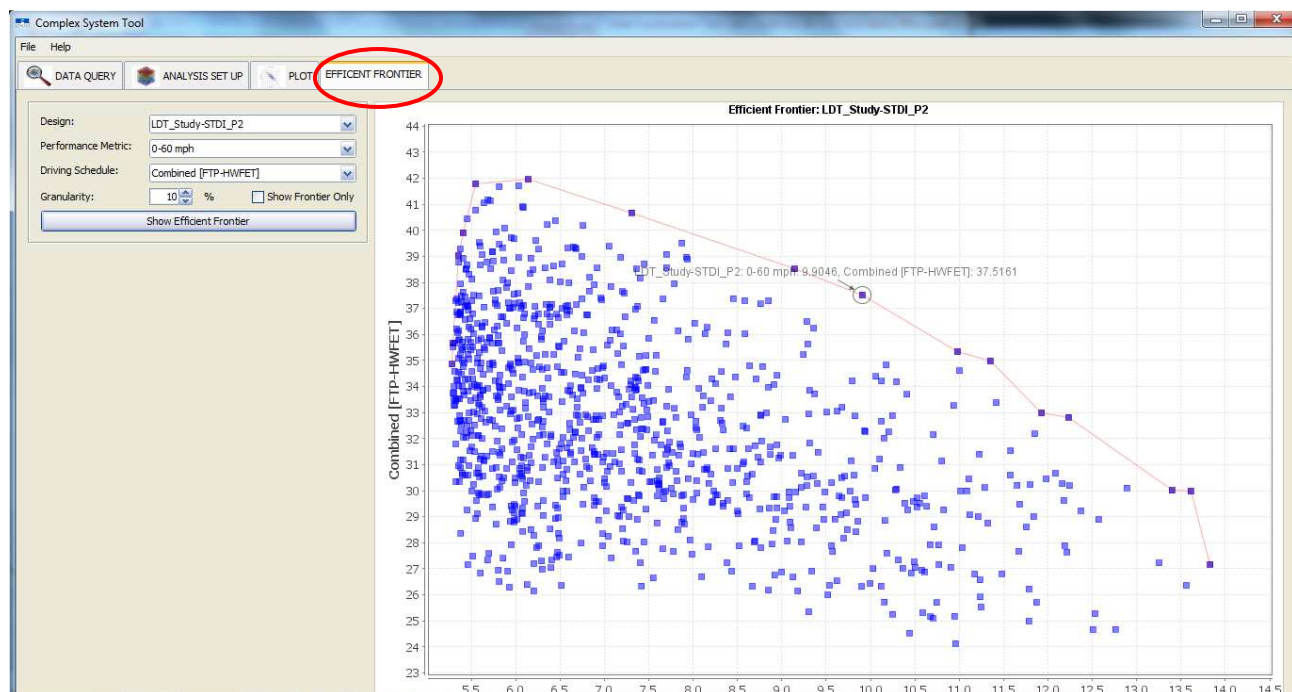


Figure 7.1: Efficient Frontier Screen: Light Duty Truck with Stoichiometric DI Turbo Engine in P2 Hybrid

8 CONCLUSIONS

The Data Visualization Tool allows EPA and other stakeholders to examine efficiently the design space developed through the program's complex systems modeling approach and to assess trade-offs between various vehicle configurations and their performance. The tool provides the necessary functionality to assess specific vehicle designs or more comprehensively explore the design space.

9 REFERENCES

1. Environmental Protection Agency, 2010, "Test Car List Data Files", available from www.epa.gov/oms/tclldata.htm.
2. Ricardo and PQA, 2008, *A Study of Potential Effectiveness of Carbon Dioxide Reducing Vehicle Technologies*. EPA Report 420-R-08-004a.
3. Ricardo and SRA, 2011, *Computer Simulation of Light-Duty Vehicle Technologies for Greenhouse Gas Emission Reduction in the 2020–2025 Timeframe*. EPA Report 420-R-11-020.

10 APPENDIX

Vehicles were assessed using three basic powertrain configurations: conventional stop-start, P2 hybrid, and Input Powersplit hybrid. Each vehicle class considered in the study was modeled with a set of technology options, as shown in Figure 10.1 for the baseline and conventional powertrains and in Figure 10.2 for the hybrid powertrains. Each of the 2020 engines marked for a given vehicle class in Figure 10.1 was paired with each of the advanced transmissions marked for the same vehicle class. Figures 10.1 and 10.2 also show the ranges of the continuous parameters—expressed as a percentage of the nominal value—used in the DoE study for the conventional and hybrid powertrains, respectively. The ranges were kept purposely broad, to cover the entire span of practical powertrain design options, with some added margin to allow a full analysis of parametric trends.

Vehicle Class	Baseline Engine & 2010 6-Speed Automatic Trans.	2010 Diesel & 2010 6-Speed Automatic Transmission	Advanced Engine				Advanced Transmission				
			Stoich DI Turbo with CPS	Lean DI Turbo with CPS	EGR DI Turbo with CPS	2020 Diesel	6-Speed Automatic	6-Speed Dry DCT	8-Speed Automatic	8-Speed Dry DCT	8-Speed Wet DCT
Small Car	X		X	X	X	X	X	X			
Standard Car	X		X	X	X				X	X	
Small MPV	X		X	X	X				X	X	
Full Size Car	X		X	X	X	X			X	X	
Large MPV	X		X	X	X	X			X		X
LDT	X		X	X	X	X			X		X
LHDT	X	X	X	X	X	X			X		X

Parameter	DoE Range (%)	
Engine Displacement	50	125
Final Drive Ratio	75	125
Rolling Resistance	70	100
Aerodynamic Drag	70	100
Mass	60	120

Figure 10.1: Baseline and Start-Stop Simulation Matrix

Vehicle Class	Hybrid Architecture		Advanced Engine				
	P2 Hybrid with 2020 DCT	Input Powersplit	Stoich DI Turbo with CPS	Lean DI Turbo with CPS	EGR DI Turbo with CPS	Atkinson with CPS	Atkinson with DVA
Small Car	X	X	X	X	X	X	X
Standard Car	X	X	X	X	X	X	X
Small MPV	X	X	X	X	X	X	X
Full Size Car	X	X	X	X	X	X	X
Large MPV	X	X	X	X	X	X	X
LDT	X		X	X	X	X	X
LHDT							

Parameter	DoE Range (%)			
	P2 Hybrid		Powersplit	
Engine Displacement	50	150	50	125
Final Drive Ratio	75	125	75	125
Rolling Resistance	70	100	70	100
Aerodynamic Drag	70	100	70	100
Mass	60	120	60	120
Electric Machine Size	50	300	50	150

Figure 10.2: P2 and Input Powersplit hybrid simulation matrix

DISCLAIMER

Ricardo Inc. has taken all reasonable care in compiling the analyses and recommendations provided in this report. However, the information contained in this report is based on information and assumptions provided by the client or otherwise available to Ricardo which, in all the circumstances, is deemed correct on the date of writing. Ricardo does not assume any liability, provide any warranty or make any representation in respect of the accuracy of the information, assumptions, and consequently the analyses and recommendations contained in this report. The report has been compiled solely for the client's use.